



The Office of University Advancement
Nexus Building – Suite 200
1 South Avenue
Garden City, NY 11530-0701

**Joint Legislative Budget Hearing on Health
New York State FY2023 Executive Budget Proposal
February 8, 2022**

Submitted by:

Maggie Yoon Grafer, B.S. '98, M.A.'08
Associate Vice President for Advancement & External Relations

Reyna Machado, MA, MBA,
Executive Director, Adelphi NY Statewide Breast Cancer Hotline & Support Program

Adelphi University has a longstanding record of responding to needs in the community, with roots going back to its founding in 1863. In 1980, the first post-mastectomy group began at Adelphi's School of Social Work. The women in the support group, all of whom felt extremely isolated when they were diagnosed, found comfort in sharing their fears, questions and experiences among others who were experiencing the same feelings

This group decided to share their positive experience by reaching out to other women facing breast cancer. At a time in history when breast cancer was not even discussed publicly these group members, along with staff, faculty, and interns at Adelphi, developed the "Woman-to-Woman Hotline." By 1990, thanks to funding provided by New York State, which continued until recent years, the program expanded and became the Statewide Breast Cancer Hotline. Today, this program has professional social work and public health staff as well as trained volunteers who run its hotline and website, and provide free counseling, education and advocacy programs to all New Yorkers.

For over 40 years, the Adelphi NY Statewide Breast Cancer Hotline & Support Program has been providing community outreach, licensed social work services (in English and Spanish) including individual and group counseling, educational forums, health referrals including COVID-19 testing, community resources and hope to thousands of New Yorkers diagnosed with breast cancer. All our services are free and confidential.

This program's impact is undeniable. In 2021, the Adelphi Statewide Breast Cancer Hotline reached more than 20,000 New Yorkers with assistance. We attended over 100 community breast cancer awareness events reaching more than 3,500 attendees. We educated 1,800 Spanish speaking and medically underserved women via breast cancer health workshops, provided 150 early detection mammography referrals, supported more than 1,000 patients via licensed counseling, and assisted over 650 patients with survivorship programs.

Unfortunately, Governor Hochul's FY2023 Executive Budget proposal (Aid to Localities budget) did not include the \$283,300 funding for the Statewide Breast Cancer Hotline and this will be

devastating to its continued operation and success in serving those inflicted with breast cancer and their families.

New York State funding accounts for one-third of the program budget and is critical to Adelphi's ability to keep the program in operation. In 2017, the program entered into a five-year appropriation (through 2022) through the Department of Health (DOH) via the New York State Grants Gateway for \$283,300 per year. Beginning in 2019, the State Senate added an additional \$100,000 in funding to the program each year through another source of local grant funding.

Unfortunately, and despite Department of Health contract, in FY2021 the program did not receive the \$283,300 via the FY2021 Executive Budget, and unfortunately, that funding was not restored during budget negotiations. However, we did continue to receive the \$100,000 in local grant funding sponsored by the Senate.

In FY2022, we again did not receive the \$283,300 from DOH in the Executive Budget, but the Senate restored \$150,000, as well as the \$100,000 in local grant funding in the Aid to Localities budget.

In addition to losing the majority of our state funding in 2020 and receiving only partial funding in 2021, COVID-19 also took its toll on charitable organizations and the program lost 40% of its other revenues overall, including monies from the Susan G. Komen organization and the LI2 Day Walk which ceased operations. The program has also faced grant reductions from other breast cancer organizations including the Beth C. Tortolani Foundation and Pink Aid who have been unable to hold gatherings or have capacity limits due to the pandemic.

To help offset these funding losses, we have submitted numerous grant applications, implemented cost-savings strategies, and organized fundraising efforts. Adelphi University, which was also financially harmed due to COVID-19, has also waived the indirect costs for the program. While we have support from our Advisory Board, volunteers and community partners, our program's needs exceed these resources.

We are at a critical point in the Adelphi NY Statewide Breast Cancer Hotline & Support Program's history. Now, more than ever, our program has an essential role to play in providing licensed social work services for the breast cancer community. To sustain our critical programs, we need New York State funding to underwrite these complimentary services.

As New York received COVID-19 federal relief program funds and the FY2023 budget proposal expends billions of dollars to assist those who were harmed financially by COVID -19, we ask, on behalf of the Adelphi University family and the statewide constituency that we serve, that the New York State continue to support this vital community program with an appropriation of \$283,300 in the FY2023 state budget. Furthermore, given the state's positive fiscal situation, we

ask that the previous two years of funding shortfalls of \$283,300 (FY2021) and \$133,300 (FY2022) also be appropriated for the program.

We thank you for your consideration of the inclusion of this critical funding for Adelphi New York Statewide Breast Cancer Hotline and Support Program in the one-house budget proposals for \$283,300 for FY2023, and if possible, an additional \$416,600 for FY2021 and FY2022.

If you have any questions or require additional information, please contact Maggie Yoon Grafer at yoona@adelphi.edu or 516-877-3844 or Reyna Machado at rmachado@adelphi.edu or 516-877-4335.

Thank you for your consideration of this testimony.

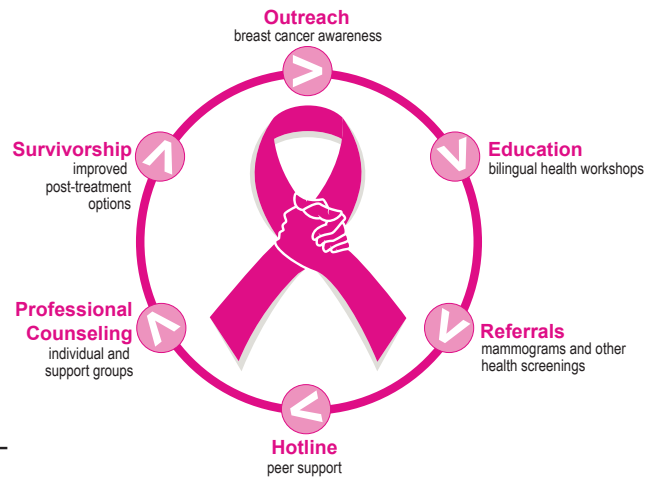


Adelphi NY Statewide Breast Cancer Hotline & Support Program
 Adelphi University, School of Social Work, 1 South Ave., PO Box 701, Garden City, NY 11530
 Office: 516.877.4320 • Hotline: 800.877.8077 • breast-cancer.adelphi.edu

The mission of the **Adelphi NY Statewide Breast Cancer Hotline and Support Program (ABCP)** is to educate, support, empower, and advocate for breast cancer patients, professionals, and the community.

In 1986, with funding from New York State, we expanded the hotline to serve all New Yorkers and today, we have the oldest toll-free **Breast Cancer Hotline** in the country. The hotline is available daily from 9 AM to 9 PM and is staffed by professionally trained volunteers; most are survivors.




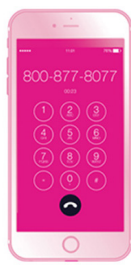


Support groups are professionally facilitated for patients who are newly diagnosed with breast cancer, women (and men) with metastatic or Stage 4 disease, women under 40, and two Spanish-language support groups for newly diagnosed women and those who are post-treatment. Our program has always responded to the needs of the community by offering topic specific groups that address their ever-changing needs. We have held support groups for women who have tested positive for the BRCA 1 and BRCA 2 genes, children whose mothers had breast cancer, and recently, we've held four-week, psychoeducational groups on art therapy.



Since 1997, the ABCP has been integral in supporting medically underserved communities with education and access to care in order to improve health outcomes. We offer **Licensed Social Work Services and Patient Navigation** (in English and Spanish) including counseling, crisis intervention and community referrals in person, via phone, and the HIPAA compliant version of ZOOM. Our **Sisters United in Health** project is a coalition of 15 organizations that provide outreach, workshops, mammography referrals for early detection, and other community resources.

We host educational, health and celebratory events year-round. **Forums** are focused on medical, legal, and wellness topics and are facilitated by experts in various fields. Every October, we host our **Celebration of Survivorship** which features a panel of speakers and provides inspiration and empowerment to the breast cancer community. All of our services are **free** and **confidential**.

Adelphi Breast Cancer Program - Our Impact In 2021

| | | |
|---|--|---|
|  <p>COMMUNITY OUTREACH OVER 100 EVENTS <small>raising breast cancer awareness</small></p> <p>WITH OVER 3,500 individuals</p> | <p>EDUCATED 1,800</p> <p>Spanish speaking and medically underserved women via breast health workshops.</p>  | <p>EARLY DETECTION 150 REFERRALS FOR</p>  <p>free or low-cost mammography screening through the New York State Cancer Services Program, Federally Qualified Health Centers (FQHCs) and other providers.</p> |
| <p>PATIENT SUPPORT PROVIDED LICENSED COUNSELING SERVICES FOR</p> <p>1,000 patients</p>  | <p>SURVIVORSHIP PROGRAMS FOR OVER 650 patients</p>  <p>which lead to improved post-treatment outcomes</p> | <p>REACH 20,000 website page views</p>  <p>breast-cancer.adelphi.edu</p> |